

**Kitchen lighting**

### **General lighting**

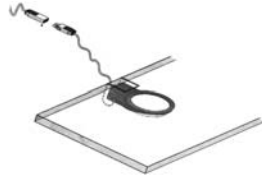
Where there are no wall cupboards, such as over a sink in front of a window, then a downlighter, directional spotlight or shaded pendant light can be fixed to the ceiling.

Ovens, cooker hoods and refrigerators usually have their own interior lights to aid visual recognition and promote hygiene by showing up dirt.

General lighting can also be provided by lights fixed above cupboards or at high level on walls to illuminate the ceiling. Alternatively, several individual low voltage spotlights can be recessed into the ceiling, or into cabinet plinths to light the floor.



LV stainless steel triangular light with 10/20W halogen lamps by Hettich



LV light for mounting under glass shelves with 10 W halogen capsule lamp – by Hettich



LV brushed nickel fitting with integral transformer and 4 × 20 W halogen capsule lamps by JCC Lighting



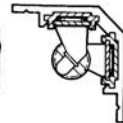
Energy saving fluorescent lamps housed in aluminium body with white perspex diffuser and integral switch with 2 × 9 W tubes – by Häfele



Standard fluorescent strip-light with rocker switch for 6 W, 8 W and 13 W tubes by Häfele



Aluminium reflector with polycarbonate diffuser 25 mm × 25 mm for 6 W, 8 W, 11 W and 13 W fluorescent tubes – by Light Graphix



LV linear festoon system with 5 W or 10 W lamps mounted on integral transformer in rigid housing in any length up to 3 m max. – by Light Graphix

## Worktop illumination